



Myanmar Earthquake 2025
Education Kit

April 1 2025

相片來源: Photo Sour

緊急呼籲 Emergency Appeal

救援黃金時間 刻不容緩

Myanmar Earthquake Relief in Critical Rescue Phase

Pre-existing humanitarian conditions in Myanmar

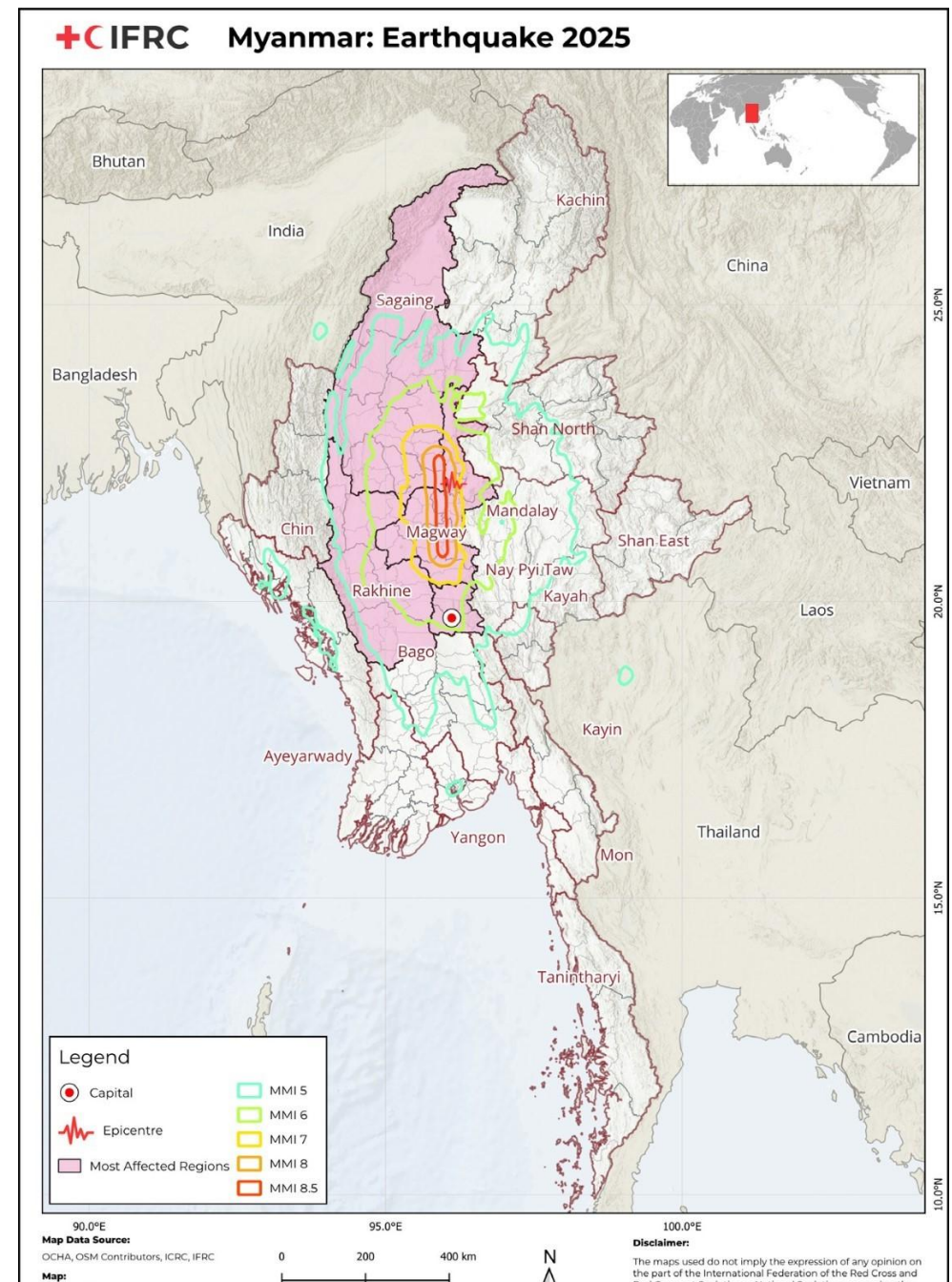
- The 5th country world-wide with the largest humanitarian needs
- In 2023, Myanmar witnessed a surge in armed conflicts, intensifying the humanitarian needs across the country
- Many of the affected areas are still recovering from the June and September floods in 2024
- About 19.9 million people, over a third of the country's population estimated, are in need of aid
- Nearly 15.2 million people face acute food insecurity, with nearly 2 million at risk of famine



Earthquake brought severe damage in central Myanmar and Thailand

- On March 28, a 7.7-magnitude earthquake hit central Myanmar, with epicenter near Sagaing city and Mandalay city, the country's second-largest city
- Strong tremors were also felt in Thailand, and Yunnan Province, China
- More than 50 aftershocks have been recorded with registered magnitudes between 4.3 and 6.7, complicating response efforts
- **Over 2,700 deaths and at least 4,500 people injured, and many missing. The number of casualties is expected to increase.**
- **Over 18 million people live in the earthquake-affected area**

(Updated on 1st April 2025)





Major infrastructure, including roads, bridges, religious sites, hospitals and residential buildings were damaged in the most affected areas.



Immediate Humanitarian needs

- Safe drinking water, basic food items
- Shelter (tents, tarpaulins)
- Hygiene materials
- First aid, medical supplies and health care services
- Mental health and psychosocial support



Humanitarian Concern - 'Multiple Crises''

- Myanmar is experiencing **extreme heat**, with temperatures exceeding 40°C
- Many are **spending nights in the open** – either because of destroyed homes or fear of further tremors
- Without proper shelters, those displaced risks heat exhaustion and dehydration
- Shortage of medical supplies: **hospitals are overwhelmed** with injured individuals

Many buildings in the disaster area have collapsed, forcing many people to take shelter in makeshift tents or sleep on the streets.



Humanitarian Concern - 'Multiple Crises''

- Myanmar primarily relies on electric power for water supply. The power outages had **severely affected water supply** in the region.
- Challenge on **transportation of relief supplies:** Main roads and bridges collapsed, international airports have been closed in the most affected areas, making access to affected regions difficult.
- **Electricity and internet access are limited** in affected areas, severely limiting real-time information sharing





Immediate actions - Myanmar Red Cross

Emergency Operation Centre was activated. Emergency response teams are **supporting search and rescue efforts**:

- ✓ Providing first aid and pre-hospital care to the injured and transporting them to nearby hospitals.
- ✓ Distribution of relief items, including drinking water, blankets, tarpaulins and hygiene kits
- ✓ Four mobile clinics have been set up and **Mental Health and Psychosocial Support** (MHPSS) is provided.
- ✓ **Restoring Family Links** is mobilized to reconnect families.

International Red Cross

An **emergency appeal has been launched:**

- Seeking approximately HKD882 million
- To support approximately **100,000** people with emergency relief items, shelter, emergency health and recovery support for 24 months:
 - **Immediate relief provision:** emergency shelter materials, essential household items
 - **Health and WASH interventions:** mobile health clinics, mental health support, referrals, disease prevention, emergency water provision



Hong Kong Red Cross Actions (Updated on April 1, 2025)



1. Immediately allocated **HK\$200,000** to support the International Red Cross's relief efforts in Myanmar
2. Launched an Emergency Appeal for the **"Myanmar Earthquake 2025"** from March 29 to April 11, 2025
3. Offering **emergency tracing services** to assist Hong Kong residents in locating family members in Myanmar who have lost contact due to the earthquake
4. Maintaining close contact with the International Red Cross and coordination in Myanmar based on the developing situation and humanitarian needs



Hong Kong Red Cross's Actions

Based on the principles of **Humanity**, **Impartiality** and **Neutrality**, the Hong Kong Red Cross will fully support the countries and regions affected by this disaster.

Regardless of identity or background, everyone may need help at some point.



What can we do in Hong Kong?

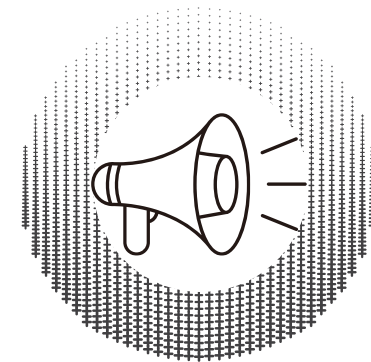
1. Continuous Attention on situations and the needs of the impacted

Aside from this earthquake that requires immediate actions, sustainable recovery plan and work will require continued support and attention from all sides.



2. Share information, call for attention

Share relevant information to as many people as possible.



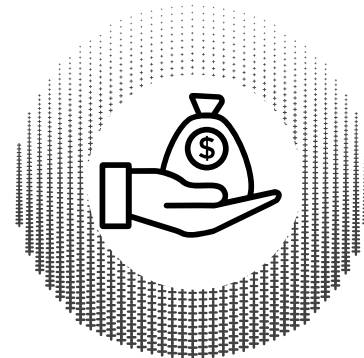
What can we do in Hong Kong?

3. Equip yourself and prepare for disasters to help those in need

Natural disasters are unpredictable, but we can proactively enhance our response capabilities. By learning disaster response knowledge, participating in drills, and creating emergency plans, we can respond to emergencies with greater confidence and be capable of helping others at critical moments.



4. Support HKRC and humanitarian work



“Everyone can, in one way or another, each in their sphere and according to their strength, contribute to some extent to this good work.”

~Henry Dunant, founder of the Red Cross and Red Crescent Movement~

I will organise a charity sale at school and the funds raised will be

I will share news on social media platforms so more people can know about the disasters happening worldwide

I will encourage empathy at my workplace by

I want to volunteer!

What actions will you take?

We hope that with each small step we take together, we can help families and communities in crisis live in safety and with dignity.

Good-to-learn about Humanitarian work: What is “Community Resilience”?

In local and international humanitarian work, the term "Community Resilience" is frequently used. It refers to **a community's comprehensive ability to prevent, respond to, and recover from disasters or crises.**

The higher the capacity, the greater the resilience.

This "resilience" encompasses various indicators, which can be broadly categorized into six key areas:

- Understanding Community Risks
- Internal Cohesion
- Diverse Economic Opportunities
- Connections with External Organizations
- Sustainable Management of Natural Resources
- Accessible Public Facilities and Services

RECOVER



TOGETHER

Good-to-learn about Humanitarian work: "Community Resilience"

RECOVER



TOGETHER

In the face of destruction from both man-made and natural disasters, Myanmar is facing tremendous challenges in infrastructure, public services, and economic opportunities.

Therefore, there is a call for all sectors to lend a helping hand and support Myanmar in gradually building the resilience of its communities!

We are currently accepting designated donations for

"Myanmar Earthquake 2025"

to support the Red Cross's disaster relief efforts,
post-disaster recovery and reconstruction,
as well as disaster preparedness and mitigation initiatives
in the region.

[Donate here](#)

Disaster Knowledge - earthquake

Disasters can occur at any moment around us, so staying alert and familiarizing ourselves with disaster response knowledge can help ensure our own safety in times of crisis and assist others in need.

For more information on disaster preparedness:

https://www.redcross.org.hk/en/edu_training/disaster_knowledge/earthquake.html



Earthquake

About

An earthquake is a sudden, rapid shaking of the earth caused by shifting of rock beneath the earth's surface. They strike without warning at any time. It will cause the collapse of buildings and destruction of life and property.

Hong Kong lies within the Eurasian Plate and is located rather far away from the nearest boundary with the Pacific Plate on the Circum-Pacific Seismic Belt. The chance of an earthquake is very small.

Before

1. Make an evacuation plan



2. Prepare a disaster kit



During

1. If the earthquake catches you indoors, stay indoors. Take cover under a sturdy piece of furniture. Stay away from glass, or loose hanging objects



2. If you are outside, move away from buildings, steep slopes and utility wires



3. Never jump off the building (Note: This is the main cause of casualties caused by earthquake)



4. When you are trapped under rubbles, do not shout. You should seek help by making noises such as knocking or whistling



After

1. Beware of aftershocks, landslide, tsunami or loose hanging objects



2. Listen to radio or television announcements about the updates



3. Check for damage and stay out of damaged buildings



Download RCDP
Mobile Application



香港紅十字會
HONG KONG RED CROSS

Enquiries:

Humanitarian Education Centre, Hong Kong Red Cross

Office Hour: Mon - Fri : 10am - 1pm, 2pm - 6pm

Contact number: 2507 7740

Email address: hec@redcross.org.hk

Address: 7/F, 19 Hoi Ting Road, West Kowloon



人道教育中心
HUMANITARIAN
EDUCATION CENTRE